



Victoria Mews St Judes Road, Englefield Green, TW20 0BF

£1,900 Per Month

Victoria Mews St Judes Road, Englefield Green, TW20 0BF

Victoria Mews is a highly sought-after residential development situated on St Judes Road, Englefield Green, offering convenient access to the area's excellent schools, village shops, local amenities, and transport links, all within walking distance.

This well-presented three-bedroom home offers spacious and practical accommodation throughout. Upstairs comprises three bedrooms, including a master bedroom with en suite shower room, a family bathroom fitted with a shower over the bath, built-in storage to bedrooms one and two, and a third single bedroom ideal as a child's bedroom, nursery, or home office/study.

Downstairs, the property benefits from a generous reception room with doors opening onto the rear garden, a separate fitted kitchen with ample worktop space and integrated appliances, and a convenient downstairs WC.

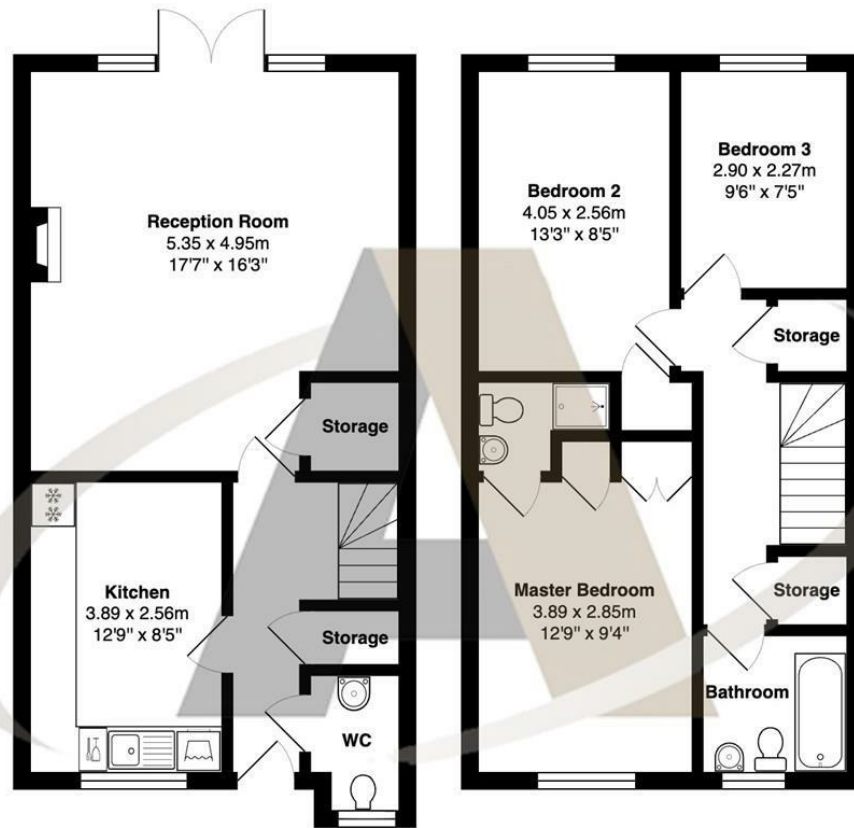
Externally, the property enjoys a good-sized private garden along with two allocated parking spaces.

Already attracting significant interest, this fantastic home must be viewed to be fully appreciated.

Please contact Aspen Estate Agents to arrange your viewing.



Floor Plan



Victoria Mews, St Judes Road, Englefield Green

Total Area: 93.3 m² ... 1005 ft²

All measurements are approximate and for display purposes only



Features

- Three bedroom family home in the sought-after Victoria Mews development
- Spacious reception room with doors opening onto the private rear garden
- Master bedroom with en suite shower room
- Good-sized rear garden and two allocated parking spaces
- Conveniently located close to local schools, village shops, amenities, and transport links
- Separate fitted kitchen with integrated appliances and ample worktop space
- Family bathroom with shower over the bath plus downstairs WC
- Available now on an unfurnished basis



Tenure - Council Tax Band -

